



# *What's happening and why?*

Movement of the school into a  
Multi Academy Trust

Plans to develop the school buildings, site  
and car parking

Initial questions

# *Black Pear Multi Academy Trust*



- Worcester based
- Est. 2014
- Six schools  
(Eight by Sept. 2024)
- Ofsted:  
Good/Outstanding
- Trust CEO  
Emma Pritchard

# *Why Black Pear, why now?*

## *Capacity*

To increase our capacity to continue to  
unlock and realise potential of  
Brockhampton

- children's achievement and progress socially, emotionally, academically
- school's place and role in its community

*To increase our capacity to continue to unlock and realise potential of Brockhampton*

*children's achievement and progress*

- Vision
- School Improvement/  
Curriculum/Pedagogy
- Investment in staff and their development

*school's place and role in its community*

- Support development of community “hub”
- Support development of site
- Support with financial challenges

# *What next?*

- Four week process:  
Further information. Questions. Concerns.
- Website page:  
Information. Presentation. Communication.  
Appointments with CEO.

# *What's happening and why?*

Movement of the school into a  
Multi Academy Trust

Plans to develop the school buildings, site  
and car parking

Initial questions

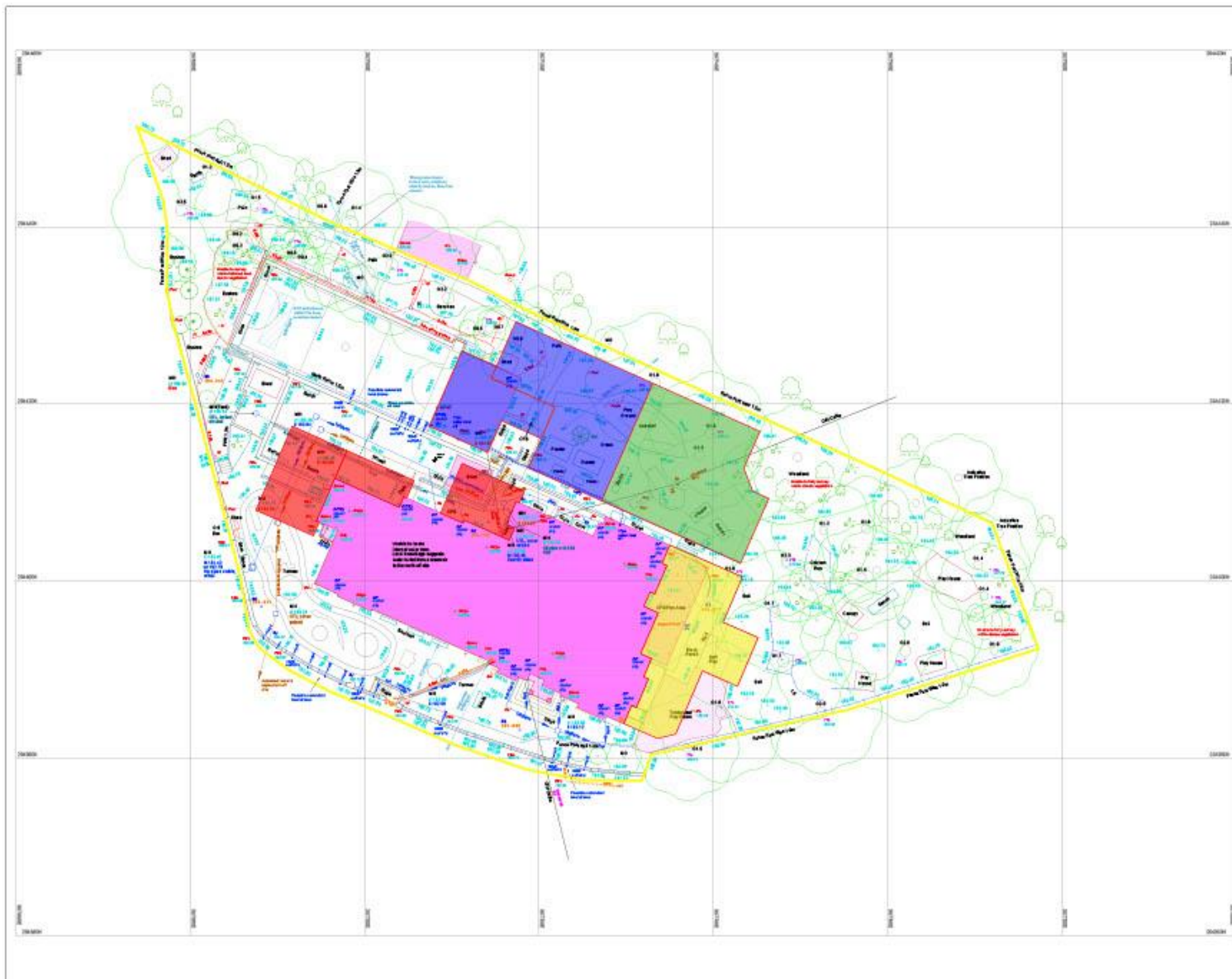
# *What's happening and why?*

Plans to develop the school buildings, site and  
car parking

## *Fit for purpose now/future*

- Pupil numbers
- Schedule of accommodation
- Pupil needs
- Safety. Staff. Community “hub”
- Plans. Funding.





- GENERAL NOTES -**
1. Check notes from this drawing, unless for planning purposes.
  2. All dimensions are to midlines (M), all levels are relative to AOD unless noted otherwise.
  3. Dimensions or coordinates are to be reported to the Client per the work commencing.
  4. Materials and methods to be used for all requests with associated British Standards, Codes of Practice, and Building Regulations Approval Documents.
  5. The recipient of this drawing is advised the Client may not hold the copyright (copyright notices) in the information.
  6. The Contractor is to check and verify all building and site dimensions, levels and areas (measurements) in our notes carefully before work commences.
  7. This drawing is to be read in conjunction with all relevant specifications and drawings issued by the Engineer, Designer and other Symbolists.
  8. It is assumed that all work on this drawing will be carried out by a competent contractor working, where appropriate, to an approved method statement.

- Phase 1
- Phase 2
- Phase 3
- Phase 4

REV:	DATE	DESCRIPTION
CLIENT:	BROOCHAMPTON ACADEMY	
PROJECT:	EXPANSION	
TITLE:	PLAN OPTION 2	

**PR Associates**  
 Building Surveyors & Consultants

The Park, High Green Farm, Wincobank  
 WIGAN, W.L.9 4JY

Telephone: 0151 6754 341  
 Fax: 0151 6754 338  
 Website: www.praproassociates.co.uk

<b>FEASIBILITY</b>			
JOB NUMBER:	2422	DATE:	MAR 24
SCALE:	0.200 @ A1	STATUS:	RP
DRAWN BY:	GA22	CHECKED BY:	

